

Working to help men in their fight against prostate cancer

What is the STRIVE Clinical Trial?

The STRIVE Clinical Trial is a phase 2 clinical research trial that will include about 400 participants. The trial will test the effects of an oral investigational drug called enzalutamide in men with prostate cancer that continues to progress despite hormone therapy. The purpose of the STRIVE Clinical Trial is to compare how well enzalutamide as compared to bicalutamide may slow progression of the disease for men with prostate cancer.

STRIVE

Join the STRIVE Clinical Trial

Do you or does someone you care about have recurrent prostate cancer? If so, please consider taking part in the STRIVE Clinical Trial for patients whose cancer may or may not have spread beyond the prostate and who have progressed on hormonal therapy. In STRIVE, patients will be randomized (flip of a coin) to receive either enzalutamide or bicalutamide (a standard medication for this condition).

Learn more

Ask your doctor or visit www.clinicaltrials.gov for more information (clinicaltrials.gov identifier NCT01664923). If you think the STRIVE Clinical Trial may be right for you, please contact:

TU | Tower Urology

8635 West 3rd Street, Suite 1 West
Los Angeles, CA 90048

TEL: (310) 854-9898 FAX: (310) 854-0267
www.towerurology.com

 **MEDIVATION**
Driven by science. Focused on life.

- Is your PSA rising?
- Does your cancer remain in the prostate or has it spread beyond?
- Is your cancer causing no or little pain?



You may qualify for the
STRIVE Clinical Trial



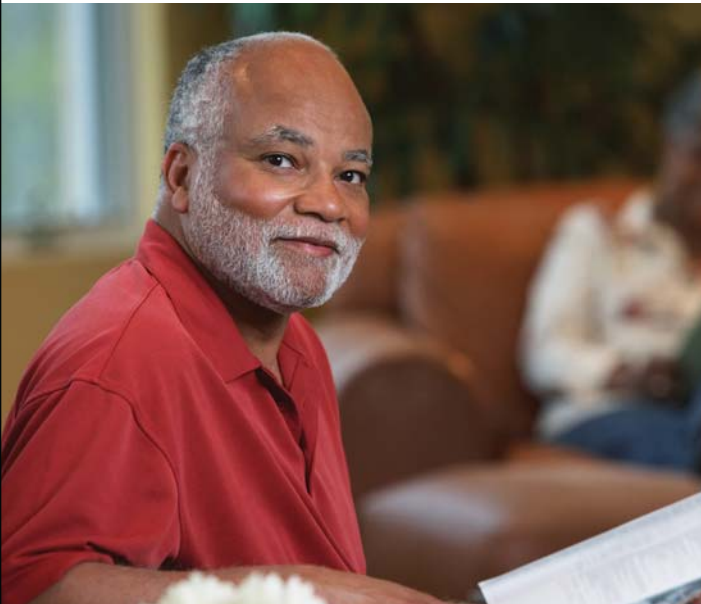
STRIVE

STRIVE

Who can join the STRIVE Clinical Trial?

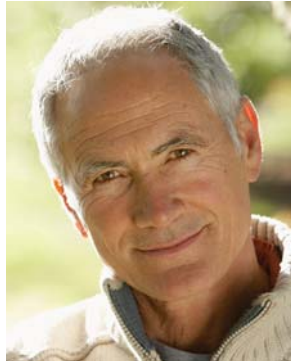
Men whose prostate cancer fits this description may be able to join the STRIVE Clinical Trial:

- **Your cancer may or may not have spread beyond the prostate**
- **Your cancer has progressed despite treatment with hormonal therapy**
- **Your cancer causes no pain or mild pain**
- **Your prostate cancer has not been previously treated with chemotherapy**
- **Your prostate cancer has not progressed on bicalutamide**



What should you expect if you join the STRIVE Clinical Trial?

You will be asked to take your study medication capsules once a day. You will continue to take shots that lower testosterone levels unless you have had an orchiectomy (had your testicles removed). Half of the trial participants will receive enzalutamide, the investigational drug being studied. Half the participants will receive bicalutamide, a standard medication for your condition.



You will be seen at the study doctor's office one month after entering the study, 2 months later, and then every 3 months thereafter while you are taking the prostate cancer trial medication on a daily basis. At each visit, the doctor will assess how well the treatment is working and whether you have any side effects. In addition to the treatment provided by the study doctor, you will continue to receive care from your current medical team.

V4.0 03 Jan 2013

STRIVE

STRIVE Clinical Trial site locations:

The STRIVE Clinical Trial is taking place at many sites across the United States.

If you or someone you care about meets STRIVE Clinical Trial entry requirements and lives near or can travel to a trial site, ask your doctor or visit www.clinicaltrials.gov for a list of trial site locations.

